

A-Detect™

COVID-19 Rapid
Saliva Antigen Test

CE

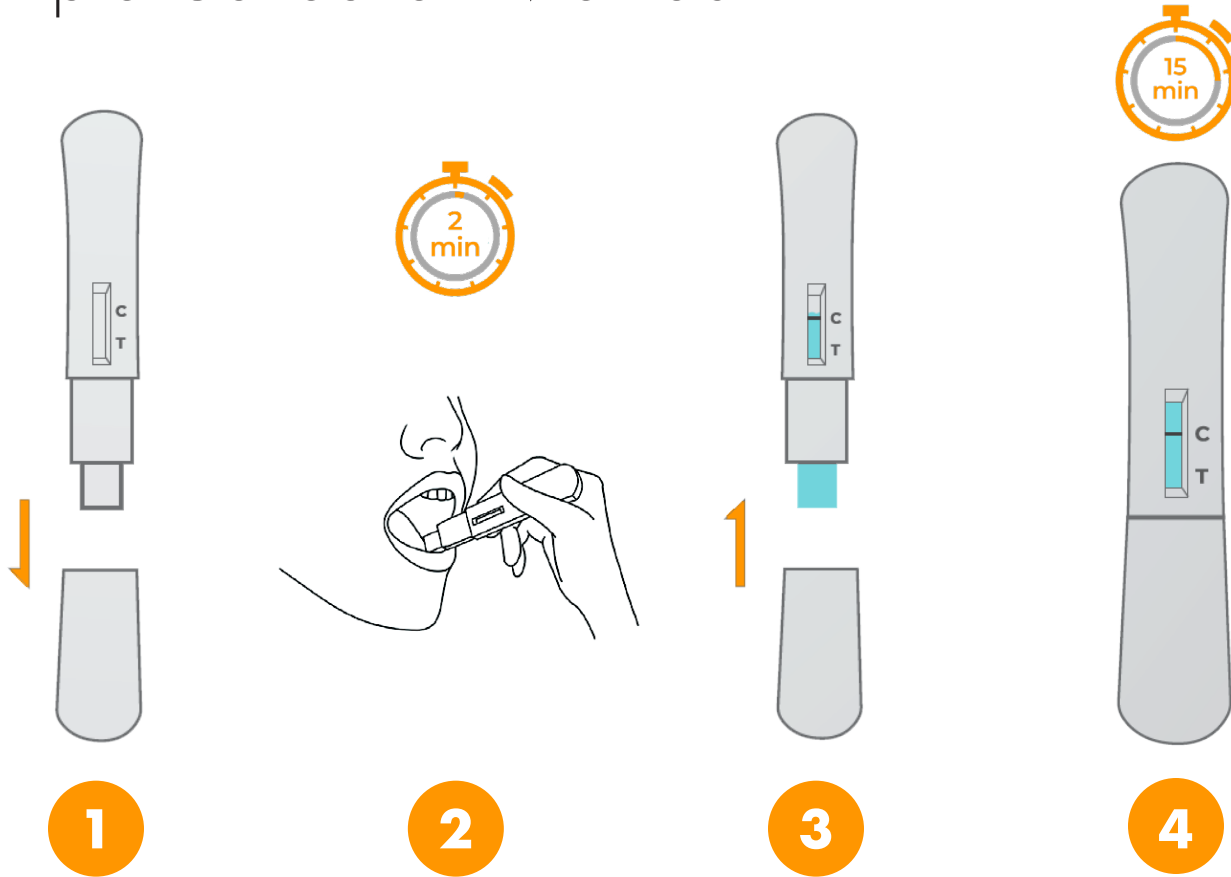


Fast
Simple
Affordable
Results in 15 Min



A-Detect™ CE

Sample Collection Method



1
Remove packaging from testing kit and take off the lid

2
Place the absorbent swab beneath the tongue for 2 minutes.

3
After removing, keep the test kit upright (with the swab portion facing down) and let the saliva move upward until it reaches or moves over Line C. Put the lid back on and lay the test kit down on a level surface.

4
After 15 minutes, the results are displayed. Interpret the results according to the test results diagram that are included in the test kit package.



Edoceo Devices is an official Distributor and Strategic Partner with the Ningbo Beautiful Life Medical Biotechnology Development Co., Ltd.